

# **Valutec** **Original** **parts**

# The world's best material

**We believe in wood.** The way we see it, it's the best material in the world. It's versatile, flexible and inspires new ways of thinking. Because even though sawmills have been around for many hundreds of years, we're constantly finding new uses and applications for wood products.

**We want the use of wood to increase,** so our focus is on developing, building and maintaining lumber kilns and control systems that enable you to ensure the right capacity and quality in your production.

**Our role is to help increase your profitability and improve day-to-day work.** The standard we set ourselves is to be attentive market leaders. Based on our knowledge of our customers' production processes and the challenges they face, we develop solutions that lead to more efficient lumber kilns, smarter control systems, better training and faster service. And most importantly, day-to-day operations that are reliable, available and as hassle-free as possible.

**We have developed our service offering** by never losing sight of the big picture, and by understanding all of the factors, big or small, that determine whether a batch has the right quality, at the right time and with the right energy consumption.

Valutec. Good for Wood.

CHAPTER	PAGE
<b>1 FLAPS AND PRESSURE FRAMES</b>	<b>5</b>
<b>2.1 MACHINE DECK   STEAM</b>	<b>11</b>
<b>2.2 MACHINE DECK   FANS, VENTILATION &amp; MOTORS</b>	<b>17</b>
<b>2.3 MACHINE DECK   HEAT</b>	<b>23</b>
<b>3 FEED</b>	<b>27</b>
<b>4 DOORS</b>	<b>31</b>
<b>5 REGULATION &amp; CONTROL</b>	<b>37</b>
<b>6 SAFETY</b>	<b>41</b>
<b>7 VALMATICS 4.0</b>	<b>47</b>
<b>8 MISCELLANEOUS</b>	<b>49</b>

# A reliable, experienced partner.

Upgrades and preventive renovations are effective measures for increasing efficiency, optimizing your lumber kiln and avoiding unnecessary production downtime.

We make sure you always get the right spare part for your Valutec kiln. This provides the right conditions for continued operation and also makes sure the CE Mark remains valid.

This catalog presents most of the spare parts we keep in stock. If you have any questions, please contact us. By doing so you gain access to Valutec's accumulated experience, expertise and documentation concerning our lumber kilns.

So, please get in touch if you have any questions or if you can't find what you are looking for. We'll make sure we find a solution!



**Rasmus Lind**  
Aftermarket Sales  
+46 910 879 71  
+46 70 291 10 54  
rasmus.lind@valutec.se



**Fredrik Ahman**  
Aftermarket Sales  
+ 46 910 879 62  
+46 70 527 07 56  
fredrik.ahman@valutec.se



# SUSTAINABILITY

**Long-term thinking characterizes everything we do, from developing new products and solutions for scheduled maintenance. Sustainability forms a natural part of our business, and a high level of performance and expertise in the field is important if we and our customers are to reach our goals.**

For us, long-term sustainable business involves creating long-term solutions in ways that are responsible and innovative in economic, ecological and social perspectives. Not only is it our responsibility to protect our planet and future generations, but also to ensure our efforts lead to a better work environment and more attractive products.

Our vision is to be the world's most sustainable lumber kiln supplier and to actively contribute to the transition toward a more sustainable society.

Our efforts to create sustainable offers involve a constant search for new ways of reducing our climate impact, while maintaining the market-leading quality we're renowned for. Two important aspects concern the way we build our kilns and the technology we equip them with.

## **More than twice the service life with stainless steel.**

Kilns made from stainless steel last for more than 40 years. And with proper maintenance, a great deal longer. Compare this to the aluminum alternatives that rarely last longer than 20 years. Among other things, it makes a big difference to the kiln's carbon footprint. An aluminum kiln that lasts 20 years has a carbon footprint of 23 metric tons per year. An FB continuous kiln from Valutec that is used for 40 years has a footprint of 8 metric tons per year. Thus the structure's carbon footprint is already offset when 400 m<sup>3</sup> of sawn lumber products have passed through the kiln.



**LASTS  
MORE THAN  
40 YEARS**



**LASTS  
APPROX  
20 YEARS**



**- 20° CELSIUS**

**x4**

**SERVICE  
LIFE**

## **New, more efficient motors reduce energy consumption.**

The temperature of our new IE5 motors is about 20° C lower than that of standard motors. This can be seen from bearing and winding temperature readings over the course of an extended test. It can result in a service life up to four times as long, as well as saving approximately 7,000 kWh during normal operation.

**Because sufficient air volume and velocity through the lumber packages are essential for optimal drying results, it's important to check the function of the flaps and pressure frames regularly.**

**1**

**Flaps and  
pressure  
frames**



**Cable wheel, Alu.**  
Art. no. 20713-03  
Description:  
Ø60/13.5x50 mm. For rolldown safety screen.  
Fits holder art. no. 20713-01.



**Cable wheel holder**  
Art. no. 20713-01  
Description:  
SS Ø60/13.5x50 mm for art. no. 20713-03



**Pressure frame WSAB Pipe end**  
Art. no. 22150-002  
Description:  
SS M20x1.5 mm.



**Pressure frame WSAB Pipe pin**  
Art. no. 22150-003  
Description:  
SS L=112 M20x1.5 mm.



**Rod end**  
Art. no. 6360-005  
Description:  
M20 SS. For pressure frame.



**Hand winch**  
Art. no. 6070-001  
Description:  
SS 1500 kg. For rolldown safety screen.

**Cylinder PNE Valutec**  
Art. no. 7700-004  
Description:  
Ø100 sl.500



**Cylinder PNE Valutec**  
Art. no. 7700-005  
Description:  
Ø100 sl.1000



**Cylinder PNE Valutec**  
Art. no. 7700-011  
Description:  
Ø100 sl.1000. Air connector, back plate.



**Cylinder PNE**  
Art. no. 7700-003  
Description:  
Ø100 sl. 500



**Cylinder 950 mm, magnetic piston WSAB**  
Art. nr 7700-010  
Description:  
Ø100 sl. 950



**Cylinder plate**  
Art. no. 7715-009  
Description:  
With gaskets. Valutec







**Pressure frame bellows kit**

Art. no. S20315-64

Description:  
Ø100 sl. 950



**Internal gasket kit**

Art. no. 7715-010

Description:  
for 7700-004, 7700-005, 7700-011



**Gasket kit, CS95-100-XSE798**

Art. no. 7715-003



**Gasket kit, Rexroth**

Art. no. 7715-005



**Piston rod guide sleeve, Rexroth Skogsnos**

Art. no. 7715-001

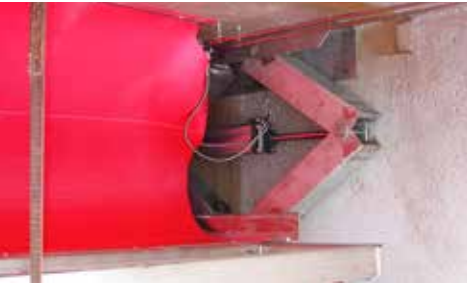
**Wire cloth**

Art. no.	Designation
6080-0200	Wire cloth, width=200
6080-0250	Wire cloth, width=250
6080-0300	Wire cloth, width=300
6080-0350	Wire cloth, width=350
6080-0400	Wire cloth, width=400
6080-0500	Wire cloth, width=500
6080-0700	Wire cloth, width=700
6080-0850	Wire cloth, width=850
6080-1000	Wire cloth, width=1000
6080-1200	Wire cloth, width=1200
6080-1400	Wire cloth, width=1400



**Scissor pressure frame**

Art. no. S20020





“

Production hours lost due to unplanned downtime are immediately noticeable on the bottom line. It's why well-planned maintenance is so important.

RASMUS LIND, Aftermarket sales

2.1

Machine  
deck  
Steam

Optimized spraying/steaming is essential for minimal checking, a controlled moisture content and balanced moisture gradients.



**Steam cabinet, 1-8 kilns**  
Art no. S 21117-01  
Description:  
Complete with pump, exchanger, valves and regulator.  
Delivered pre-assembled in cabinet.



**Steam pipe**  
Art. no. 20681-02  
Description:  
For 7 nozzles. L=2800 mm excl. nozzles.



**Steam pipe, lance**  
Art. no. 20681-08  
Description:  
L=1470 mm. Bracket for new installation: 20681-09.

**Steam pipe, upright installation**  
Art no. S 20681-15  
Description:  
Easily removed for nozzle replacement.  
Ideal for installation in batch kilns  
with side-mounted fans and heater coils.

**Ball valve with actuator**  
Art. no. 7010-010  
Description:  
240 V, DN15.



**Ball valve DN 15**  
Art no. 7000-025  
Description:  
For Art no. 7010-010



**Ball valve DN15**  
Art. no. 7000-017  
Description:  
Older steam valves (Valpes).



**Valve, two-way magnetic**

Art. no.	Designation
7010-016	Valve, two-way MXF Magnetic + BF PN16 130°C
7010-017	Valve, two-way MVF Magnetic PN16 180°C



**Solenoid valve**  
Description:  
DN10

Art. no.	Designation
7025-001	Solenoid valve 0–10 bar 10 IG/IG 220V Humidity sensor
7025-002	Solenoid valve 0-50 bar 15 IG/IG 220V Steaming







High-pressure pump

Art. no.	Designation
7045-015	Pump, high pressure, HELIX V614/25 PN16 3 kW
7045-016	Pump, high pressure, HELIX VE615-1/25/E/K frequency controlled



Filter holder

Art. no. 7050-003



Filter insert

Art. no. 7050-001

Description:  
For water filter art. no. 7050-003.



Nozzle M

Description:  
1/4"

Art. no.	Designation
7075-001	Nozzle 1/4" M6
7075-010	Nozzle 1/4" M3
7075-012	Nozzle 1/4" M4

Nozzle 100 bar

Art. no. 7075-004



Nozzle, Fog-Jet

Description:  
5/16 UNF. Fits 7075-013.

Art. no.	Designation
7075-008	Nozzle 20982-2
7075-009	Nozzle 20982-3
7075-016	Nozzle 20982-6



Spray head, for 7 nozzles

Art. no. 7075-013

Description:  
5/16"



Nozzle filter

Art. no. 7075-011

Description:  
Filter for M nozzles.



Nozzle 1/4 M3 center SS

Art no. 7075-017

Description:  
1/4"







Nozzle 1/4" M6 centre SS

Art. no. 7075-014

Description:  
1/4"



Nozzle LNN

Description:  
1/4"

Art. no.	Designation
7075-002	Nozzle 1/4 LNN 8 ext.
7075-006	Nozzle 1/4 LNN 2 ext.
7075-007	Nozzle 1/4 LNN 3 ext.
7075-015	Nozzle 1/4 LNN 6 ext.



Heat exchanger

Art. no. 7060-001



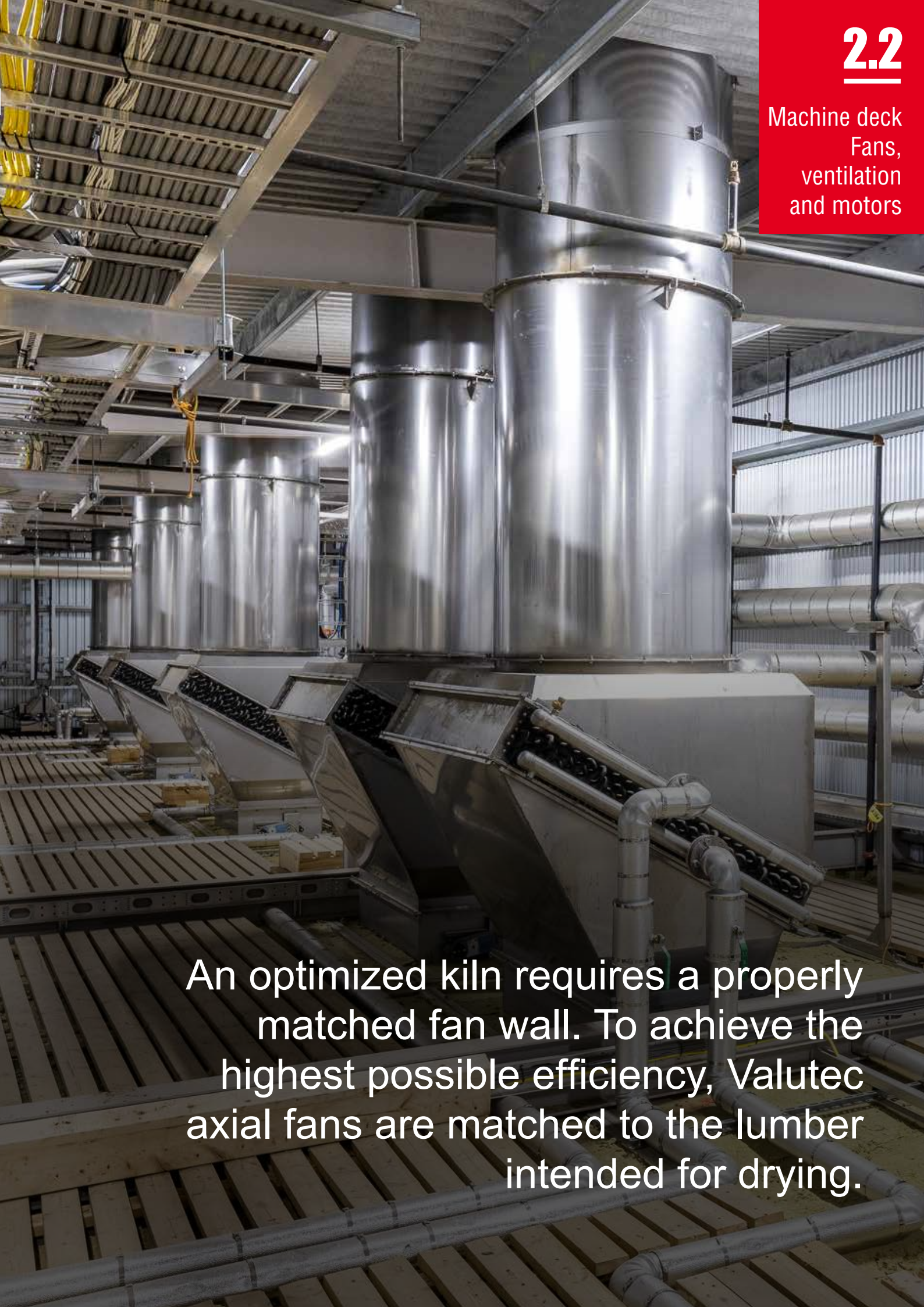
Heat exchanger

Art. no. 7060-002



Temperature regulator

Art. no. 6519-001



An optimized kiln requires a properly matched fan wall. To achieve the highest possible efficiency, Valutec axial fans are matched to the lumber intended for drying.





Fan wall, Valutec

Description:  
Motor size 11–45 kW

Art. no.	Chassis
S2207X	1600 mm
S2206X	1400 mm



Fan chassis, Valutec, replaces older versions

Description:  
Motor size 11–45 kW

Art. no.	Chassis
21900-50	1600 mm
21900-51	1400 mm
6700-008	AK 071



Frequency converter ABB

Art no.	Designation
6540-014	Frequency converter ABB ACS850 22/30kW IP20
6540-015	Frequency converter ABB ACS850 37kW IP20
6540-011	Frequency converter ABB ACS850 7.5/11kW IP20
6540-044-SP	Frequency converter ABB ACS580 1.1kW IP21
6540-034-SP	Frequency converter ABB ACS580 11kW IP21
6540-035	Frequency converter ABB ACS580 15kW IP21
6540-036-SP	Frequency converter ABB ACS580 22kW IP21
6540-037-SP	Frequency converter ABB ACS580 30kW IP21
6540-038-SP	Frequency converter ABB ACS580 37kW IP21
6540-039	Frequency converter ABB ACS580 45kW IP21
6540-032-SP	Frequency converter ABB ACS580 5.5kW IP21
6540-033	Frequency converter ABB ACS580 7.5kW IP21
6540-052	Frequency converter ABB ACS880 18.5/22kW IP21
6540-047	Frequency converter ABB ACS880 22/30kW IP21
6540-045	Frequency converter ABB ACS880 4/5.5kW IP21
6540-050	Frequency converter ABB ACS880 4/5.5kW IP21
6540-046	Frequency converter ABB ACS880 5.5/7.5kW IP21
SP=Inventory item	



Kiln motor ABB and SynRM

Art no.	Designation
6560-038	Kiln motor ABB 3kW 4-pole M3BP IE3
6560-016-SP	Kiln motor ABB 7.5kW 4-pole M3BP IE3
6560-017-SP	Kiln motor ABB 7.5kW 6-pole M3BP IE3
6560-018-SP	Kiln motor ABB 11kW 4-pole M3BP IE3
6560-019-SP	Kiln motor ABB 11kW 6-pole M3BP IE3
6560-020	Kiln motor ABB 15kW 4-pole M3BP EI3
6560-021-SP	Kiln motor ABB 15kW 6-pole M3BP IE3
6560-022-SP	Kiln motor ABB 22kW 4-pole M3BP IE3
6560-023-SP	Kiln motor ABB 22kW 6-pole M3BP IE3
6560-024-SP	Kiln motor ABB 30kW 4-pole M3BP IE3
6560-025-SP	Kiln motor ABB 30kW 6-pole M3BP IE3
6560-026-SP	Kiln motor ABB 37kW 4-pole M3BP IE3
6560-027	Kiln motor ABB 37kW 6-pole M3BP IE3
6560-028	Kiln motor ABB 45kW 4-pole M3BP IE3
6569-008	Kiln motor SynRM 11 kW 1000rpm M3BL IE5
6569-005	Kiln motor SynRM 11 kW 1500rpm M3BL IE5
6569-010	Kiln motor SynRM 15 kW 1000rpm M3BL IE5
6569-003	Kiln motor SynRM 22 kW 1000rpm M3BL IE5
6569-006	Kiln motor SynRM 22 kW 1500rpm M3BL IE5
6569-002	Kiln motor SynRM 30 kW 1500rpm M3BL IE5
6569-007	Kiln motor SynRM 30 kW1000rpm M3BL IE5
6569-009	Kiln motor SynRM 37 kW 1500rpm M3BL IE5
SP=Inventory item	



Fan wheel

Art. no.	Designation	Speed, rpm
6611-160-4537	Fan wheel EW 160 6P-45kW-10W	975
6614-140-2224	Fan wheel EW 140 4P-22kW-4W	1475
6614-140-3029	Fan wheel EW 140 4P-30kW-4W	1475
6614-140-3732	Fan wheel EW 140 4P-37kW-4W	1475
6614-140-4536	Fan wheel EW 140 4P-45kW-4W	1475
6615-125-1527	Fan wheel EW 125 4P-15kW-5W	1475
6616-063-0228	Fan wheel EW 063 4P-1.6kW-6W	1475
6616-090-1140	Fan wheel EW 900 4P-11kW-6W	1475
6616-090-1846	Fan wheel EW 090 4P-18.5kW-6W	1475
6616-100-0524	Fan wheel EW 100 4P-5.5kW-6W	1475
6616-100-1136	Fan wheel EW 100 4P-11kW-6W	1475
6616-112-1835	Fan wheel EW 112 4P-18.5kW-6W	1475
6616-125-1130	Fan wheel EW 125 6P-11kW-6W	975
6616-125-1535	Fan wheel EW 125 6P-15kW-6W	975
6616-125-1826	Fan wheel EW 125 4P-18,5kW-6W	1475
6616-125-2229	Fan wheel EW 125 4P-22kW-6W	1475
6618-160-2230	Fan wheel EW 160 6P-22kW-8W	975
6618-160-3034	Fan wheel EW 160 6P-30kW-8W	975
6620-160-1537	Fan wheel DW 160 6P-15kW-13W	975
6620-160-2241	Fan wheel DW 160 6P-22kW-13W	975
6620-160-3046	Fan wheel DW 160 6P-30kW-13W	975
6621-125-1144	Fan wheel DW 125 6P-11kW-10W	975
6621-125-1546	Fan wheel DW 125 6P-15kW-10W	975
6621-140-1142	Fan wheel DW 140 6P-11kW-10W	975
6621-140-1548	Fan wheel DW 140 6P-15kW-10W	975
6625-125-1136	Fan wheel DW 125 4P-11kW-5W	1475



Damper

These dampers can be fitted to existing continuous kilns.

Art no.	Designation
21460-01	Damper 700x700 Height 450
21461-01	Damper 1200x700 Height 450

Conduit

Art. no.	Designation
20407-15	Conduit ALU 700x700 L=1500
20407-17	Conduit ALU 700x700 L=2000
20407-19	Conduit SS 700x700 flange L=1500
20407-21	Conduit SS 700x700 flange L=2000
20407-12	Conduit Ø1000 45° with flange
20407-34	Conduit Ø1000 L=1250 with flange
20407-10	Conduit Ø1000 L=1500 with flange
20407-11	Conduit Ø1000 L=750 with flange
20407-41	Conduit Ø1250 L=1250 with flange
20407-42	Conduit Ø1250 L=1500 with flange
20407-40	Conduit Ø1250 L=750 with flange
20407-33	Conduit Ø630 L=1500 with ABB flange
20407-26	Conduit Ø630 L=1500 with flange
20407-32	Conduit Ø630 L=750 with ABB flange
20407-24	Conduit Ø630 L=750 with flange
20407-43	Conduit Ø630-675x675 90°
20407-35	Conduit Ø800 45° with flange
20407-30	Conduit Ø800 L=1500 with flange
20407-28	Conduit Ø800 L=750 with flange
20407-02	Conduit Ø900 L=1500 with flange
20407-06	Conduit Ø900 L=500 with flange



Hatch 700x700

Art. no. 20637-05

Description:

This safety hatch can be matched to existing hatches.







Heat recovery for continuous kilns, air/air

Art no. S20402

Description:  
VÅVLL



Heat recovery for batch kilns  
and continuous kilns, air/water

Art no. S20874

Description:  
VÅVLV



Heat recovery for batch kilns, air/air

Art no. S20402-46

:



Rotary actuator 180° EL

Art. no. 6575-001



Rotary actuator 180° PNE

Art. nr 7700-007:

Description:  
Fits rotary actuator 180°



Gasket kit, rotary actuator cylinder

Art. no. 7715-002

Description:  
WMA/RA35 HT.

A truly good drying process  
requires a reliable heat supply.  
Valutec's solutions can also  
provide up to 20 percent  
heat recovery.



Valves

Art. no.	Designation
7010-011	Valve, three-way. VXF32.65 130°C
7010-012	Valve, three-way. VXF32.80 130°C
7010-013	Valve, three-way. VXF42 150°C
7010-014	Valve, three-way. VXF42.65 150°C
7010-015	Valve, three-way. VXF42.80 150° C
7010-019	Valve, three-way. VXF43.65 220°C
7010-020	Valve, three-way. VXF43.125 220°C
7010-022	Valve, three-way. VVF53.50 220°C
7010-034	Valve, three-way. VXF42.50.40 150°C



Sealing gland

Art. no. 7090-008

Description:  
Sealing gland VXF31.90 for 150,  
VXF41.50 for 150



Sealing gland

Art. no. 7090-009

Description:  
Sealing gland VXF31.65, 31.80



Actuator

Art. no.	Designation
6570-001	Actuator SKD 60SL
6570-002	Actuator SKD 32. 50SL
6570-003	Actuator SKC 60
6570-004	Actuator SKB 32. 50
6570-005	Actuator SKB 60
6570-010	Actuator SM24A-MP
6570-011	Actuator MS-35 M4LR 24V
6570-014	Actuator SKD 62L
6570-016	Actuator SKB 62
6570-017	Actuator SKC 62

Thermal batteries

Valutec can supply thermal batteries and heat recovery systems for most kilns available today. Contact us for a proposal!



Circulator pumps

Valutec can supply circulator pumps for all kilns available today. Contact us for a proposal.

Art. no.	Designation
7045-011	Pump IL 100
7045-010	Pump IL 50
7045-014	Pump IL 50 GLYCOL
7045-009	Pump IL 80



Shaft seal

Art. no. 7090-013

Description:  
Shaft seal, Pump Wilo IL50–IL80



Shaft seal

Art. no. 7090-014

Description:  
Shaft seal, Pump Wilo IL100







“

Our products are designed to be reliable and easy to maintain. Even so, we offer our committed support as a matter of course should the unexpected occur.

ROBERT LARSSON, CEO

The Valutec feeder system is fully automatic and frequency controlled. Our patented system is also integrated with sensors and the kiln's safety solutions





**Timber trolleys**  
We can supply timber trolleys for most kilns currently available. Contact us for a proposal!



**Bar feeder**  
We can supply bar feeders for most kilns currently available. Contact us for a proposal!



**PME driver**  
Art. no. 7960-020  
Description:  
WSAB



**Rubber block**  
Art. no. 6320-001  
Description:  
60x80x185 mm. Seal, rail passage through doorway.



**Rod bolt**  
Art. no. 7950-002  
Description:  
ABB bar feeder.



**Drawbar seal**  
Art. no. 7960-013  
Description:  
Drawbar seal, outer WSAB door.

**Actuator 5 m**  
Art. no. 6570-015  
Description:  
Electric stop (Valutec).



**Circuit breaker TD461**  
Art. no. 6510-005



**Feeder PMS**  
Art. no. 7960-032  
Description:  
WSAB – right and left.

**Gear drive**  
Art. no. 6205-008  
Description:  
Gear drive DM40



**Bevel gear drive 3 kW**  
Art. no. 6205-001  
  
**Motor for 6205-001**  
Art. no. 6205-003



**Sensor, inductive**

Art no.	Designation
6515-016	80x80 SN=60 IP67 loose cable
6515-026	Short M30 PNP SL SN=20mm





**Sensor connection cable**  
Art no. 6515-014  
Description:  
20 m M12 4p. female.angled PVC



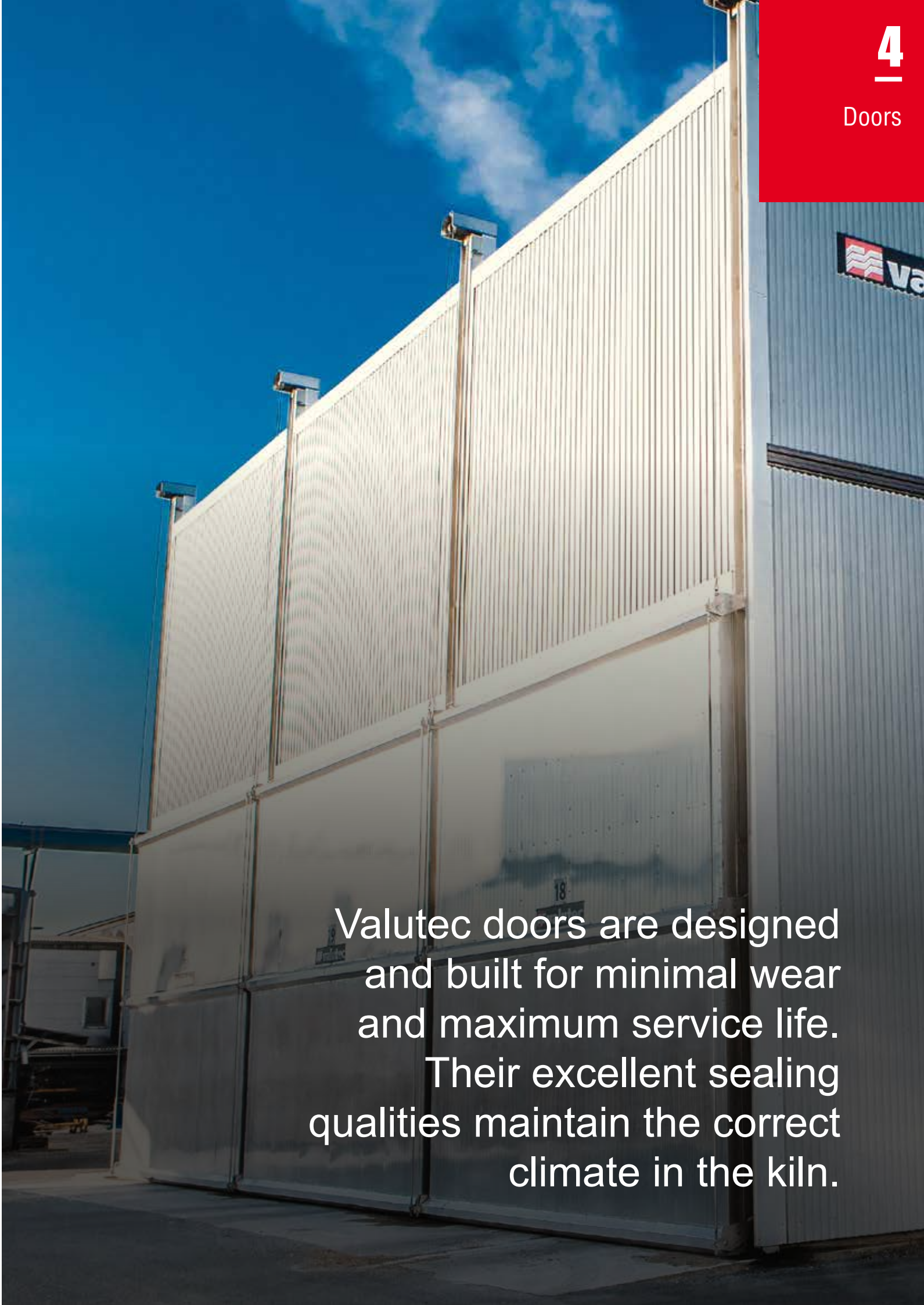
**Feed components**

Art. no.	Designation
20447-02	Feed sled 1005
20448-02	Feed sled 1005 with releaser
20455-02	Arm
20452-02	Carrier arm
6360-001	Fork link
6300-007	Spring
20663-20	Feed trolley stop loading
20655-39	Feed sensor holder trolley indicator H=278
20655-33	Feed trolley stop guides ingoing
20660-09	Feed return stop 200
20660-14	Feed trolley stop 200 lifting



**Timber trolley wheels**  
Description:  
A selection of wheels is listed below.  
Other models available upon request.

Art. no.	Designation
20720-64	Wheel E trolley Ø110 flange with axle, bearings
20720-59	Wheel E trolley Ø110 with bearings, axle
20211-03	Wheel SPO 185-35.5 G
6210-001	Wheel SPO 200-20G
20720-53	Wheel TW timber trolley Ø100 flange with bearings
20720-54	Wheel TW timber trolley Ø100 with bearings
20720-69	Wheel timber trolley Ø140x75 ABB
20720-66	Wheel timber trolley Ø200 6.3 tonnes with bearings
20720-67	Wheel timber trolley Ø200 flange 6.2 tonnes with bearings
7960-026	Wheel WSAB timber trolley Ø100x90 w/o bearings
7960-025	Wheel WSAB timber trolley Ø120x90 w/o bearings
7960-023	Wheel WSAB timber trolley Ø130/100x76 w/o bearings
7960-027	Wheel WSAB timber trolley Ø150/120x90 w/o bearings
7960-024	Wheel WSAB timber trolley Ø179/150x90 w/o bearings



Valutec doors are designed and built for minimal wear and maximum service life. Their excellent sealing qualities maintain the correct climate in the kiln.





**Doors**  
We can supply complete doors for most kilns currently available. Contact us for a proposal!



**Complete door windlass**  
Art. no. 20120-02  
Description:  
Motor for windlass art. no. 6205-011



**Position indicator**  
Art. no. 21240-01  
Description:  
Windlass drive unit position indicator (Valutec)



**Plastic roller espagnolette door**  
Art. no. 21926-05



**Sensor spindle limit position**  
Art. no. 6515-007  
Description:  
Sensor spindle limit position.



**Circuit breaker, cable break TD 461**  
Art. no. 6510-003

**Hydraulic unit door lift incl. tank**  
Art no. 7760-006  
Description:  
1.5 kW 400 V Q=8.5 V=10 l



**Gear drive**  
Art. no. 6205-007  
Description:  
Gear drive SK42



**Roller for slack cable circuit breaker**  
Art. no. 7960-010



**Cable wheel**  
Art. no. 20734-02  
Description:  
Cable wheel Ø200xØ8 Ø35 Steel



**Cable wheel**  
Art. no. 7960-002  
Description:  
Cable wheel 8 mm ball bearings



**Cable wheel**  
Art. no. 7960-001  
Description:  
Cable wheel 10 mm WS ball bearings







Door cable

Art no.	Designation
6355-003	Cable Ø10 mm 20 m with thimble+shackle
6355-004	Wire Ø8 mm 20 m med SS thimble
6355-007	Wire Ø8 mm M12 18 m WSAB
6355-008	Wire Ø10 mm M16 18 m WSAB



Door seal mounting strip

Art. no. 2598-004

Description:  
Door seal mounting strip 30x9 L=2500



Door seal mounting strip 90°

Art. no. 21927-01

Description:  
Mounting rail alu 90° door seal



Door seal

Art no. 6310-006

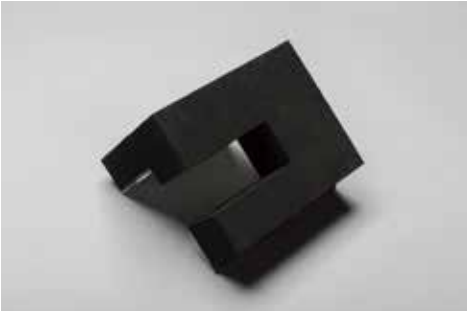
Description:  
Door seal WS3 L=22 m roll



Bottom seal

Art no. 6310-005

Description:  
7.5 m



Corner seal door leaf

Art. no.	Designation
21118-01R	Corner seal door leaf right
21118-01L	Corner seal door leaf left

Corner seal door WSAB

Art. no.	Designation
7960-006	Corner seal door WSAB right
7960-007	Corner seal door WSAB left



Cylinder door lift WSAB

Art no. 7960-008



Cylinder door lift ABB

Art no.	Designation
7950-016	Cylinder door lift ABB left
7950-017	Cylinder door lift ABB right



Gasket kit

Art no. 7750-002

Description:  
Gasket kit hydraulic cylinders 50/25 to 7960-008.





“

Having operators who are very familiar with the kiln is extremely important, as this allows us to plan to gather and carry out maintenance and modernizations cost-effectively.

FREDRIK ÅHMAN, Aftermarket sales



Sensors are your eyes and ears in the kiln. They alert you whenever the kiln climate needs regulating. Therefore, always make sure they are in good condition.





**Actuator**  
Art. no. 6570-009  
Description:  
Actuator GBB 331.1E



**Actuator**  
Art. no. 6570-008  
Description:  
Actuator GBB161.1E



**Solenoid valve**  
Art. no. 7710-006  
Description:  
Condensate diverter



**Pneumatic actuator, Jall/Tall**  
Art no. 7960-014

**Membrane**  
Art no. 7707-003  
Description:  
To Sauter actuators



Sensor PT100	
Art. no.	Designation
6515-001	Sensor PT100 15 m, 170 mm, 4-wire
6515-002	Sensor PT100 5 m, 170 mm, 4-wire

**Sensor PT100**  
Art no. 6515-003  
Description:  
PT100 excl. sheath



**Sheath**  
Art no. 4090-005  
Description:  
Sheath excl. PT100



**Sensor RYS**  
Art. no. 6515-006  
Description:  
Conn. CL=1 m PT100



**Humidity sensor bath**  
Art. no. S20870-52  
Description:  
For continuous kiln



**Level sensor**  
Art. no. 6515-020  
Description:  
Level switch



**Humidity sensor arm**  
Art. no. 20872-04  
Description:  
Rotatable (sensor not incl.)







**Humidity sensor arm**  
Art. no. 20872-11  
Description:  
Fixed mount (sensor not incl.)



**Humidity sensor cloth, blue**  
Art. no. 6075-002  
Description:  
170x100 sewn, 50 pcs/carton



A safe working environment  
in and around the lumber  
kiln is always top priority. We  
regard the latest regulations as  
a minimum requirement.



**Safety light curtain**  
Art. no. 21115-10



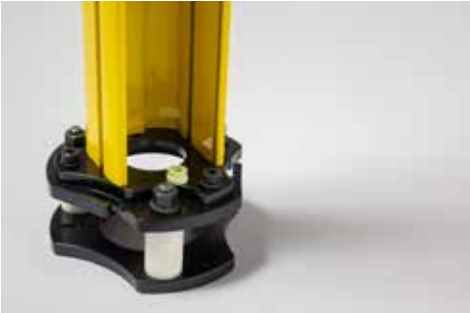
**Light boom, 3-beam receiver**  
Art. no. 6512-009  
Description:  
800 0.5–50 m (-30°C)



**Light beam, 3-beam sender**  
Art. no. 6512-010  
Description:  
800 0.5–50 m (-30°C)



**Light curtain mounting post**  
Art. no. 6512-005



**Base for light curtain**  
Art no. 6512-027

**Connection cable 25 m M12 5p.female.angled**  
Art no. 6512-004

**Light barrier bracket, twin pack**  
Art no. 6512-019

**Light boom, 1-beam receiver**  
Art. no. 6512-016  
Description:  
0.5–70 m (-30°C)



**Light boom, 1-beam receiver**  
Art. no. 6512-017  
Description:  
0.5–70 m (-30°C)



**Photocell muting (sender)**  
Art. no. 6512-020



**Photocell muting (receiver)**  
Art. no. 6512-021



**Signal tower, LED**  
Art. no. S99070-05







Door, mesh

Art. no.	Designation
6005-011	Mesh door for machine safety
6005-012	Mesh door for machine safety



Gate handle, plastic casing

Art. no. 6005-007



Gate, partitioning

Art. no.	Designation
6005-009	1000x1500 HDG
6005-003	1200x1500 HDG
6005-010	400x1500 HDG
6005-004	600x1500 HDG
6005-005	800x1500 HDG
6005-006	Gate post 1650 complete HDG



Hinge for door, mesh

Art. no. 6005-013

Description:  
Fits  
6005-011  
6005-012

Gate, spring latch casing

Art. no. 6005-008

“

Upgrading and renovating kiln installations is usually a smart investment. With proper maintenance and care, our stainless steel kilns can last longer than a human working lifetime.



JOAKIM BERGLUND,  
Sales Manager

# A VALUE-ADDED SERVICE VISIT

If you lack the time or opportunity to inspect your facility yourself, let us come by on a service call. During the call, we thoroughly inspect the kiln to gain a complete picture of its status and capabilities. Then we draw up a maintenance or renovation schedule to help you dry lumber efficiently and at the right quality. Get in touch with Rasmus or Fredrik, let them tell you more and book a visit.

**Rasmus Lind**  
Aftermarket Sales  
+46 910-879 71  
+46 70-291 10 54  
rasmus.lind@valutec.se

**Fredrik Åhman**  
Aftermarket Sales  
+ 46 910-879 62  
+46 70-527 07 56  
fredrik.ahman@valutec.se





“

An easy way to lower your energy costs while improving your lumber quality is to upgrade the control system to Valmatics 4.0.

THOMAS WAMMING, R&D Manager



7

Valmatics  
4.0

Valmatics 4.0 is the only control system for lumber drying that can optimize the drying process according to quality, capacity and energy consumption simultaneously.



# A world-leading control system

**Valmatics 4.0** is the only control system that combines simulator technology with adaptive control. It's a powerful system that calculates optimal drying processes for all kiln models. Also, the system's user interfaces and functions are under constant development.

## Intuitive user interface

- Developed readings from measurement systems and user-friendly settings make it easy for operators to optimize the drying process.
- Quick and simple troubleshooting with a presentation showing trends.
- Ability to connect to external systems, such as business systems.

## Future-proof and backward compatible

- Suitable for the latest PLC technology to meet tomorrow's higher quality requirements.
- Backward-compatible design reduces upgrade costs.



## Property-centered control

- Improved and simplified property-centered control.
- The only control system on the market that enables optimization according to capacity, quality and energy consumption simultaneously.

## Optimized for TC continuous kilns

- Full system support even for advanced TC continuous kilns.
- Simulator for batch and TC continuous kilns with control and complete schedules in up to 14 zones at a time.

## Continuous development

- New functions are added all the time such as for the interaction of drying with boiler load and optimization with regard to electricity market spot prices.

## Time to upgrade?

If you've yet to take the step over to Valmatics 4.0 and feel that it's high time, then contact Rasmus or Fredrik at Valutec and let them help you.



Learn more about Valmatics 4.0  
at [www.valutec.ca/products/control-system/](http://www.valutec.ca/products/control-system/)

Sometimes it's the little things that make the biggest difference. Whatever your needs, we have the right equipment. From air filters to sealing strips and silicone.



**Air filter**  
Art. no. 6980-002  
Description:  
Spiro conduit filter Ø400



**Air filter**  
Art. no. 6980-004  
Description:  
Spiro filter for conduit filter cassette art. no. 6980-003



**Air filter cassette**  
Art. no. 6980-003



**Forklift-handled stack support**  
Art no. 20587  
Description:  
Stainless steel



**Tensioning strap safety restraint**  
Art. no. 6330-001  
Description:  
Strap with 1 m webbing shackle SS



**Tensioning strap safety restraint**  
Art. no. 6330-002  
Description:  
Webbing 14 m with shackle SS

**Sealing strip**  
Art. no. 6310-001  
Description:  
Clamp-O 11x11 the vertical installation



**Sealing strip**  
Art. no. 6310-004  
Description:  
Clamp-O 11x11 horizontal installation



**Grease, high temperature**  
Art. no. 8040-002  
Description:  
Grease for VEM motors, 400 g, 12 pcs/box



**Grease ABB**  
Art. nr 8040-019  
Description:  
Grease for ABB motors, 400 g. 12 pcs/box



**Silicone**  
Art. nr 8040-012  
Description:  
Silicone, gray, 0.6 l. 20 pcs/box



**Diffunol**  
Art. no. 8040-016  
Description:  
Paint for concrete kiln interiors.





# We keep tabs on things

We're the guys who make sure the right original parts are in stock; we take your orders and make sure your new parts get to you as quickly as possible. Orders received before 12 noon are shipped the very next day!

Daniel Lind

Kaweewit Khonhan

Peter Lindmark



## Follow Valutec on Facebook

Want to be the first with the latest news and insights from the world of lumber drying? Or maybe take a peep into the workaday life of a sawmill? Follow us on Facebook and find out much more.

[facebook.com/ValutecAB](https://facebook.com/ValutecAB)

## Digital inspection report

Working together with KO Society, Valutec has produced a digital inspection report to facilitate inspection of your lumber dryers. Go through your kiln step-by-step right on your cell phone. When you're done, a report will be sent to your inbox.







**SWEDEN**

Valutec AB  
Box 709  
SE-931 27 Skellefteå  
SWEDEN

Phone +46 (0)910 879 50

[valutec@valutec.se](mailto:valutec@valutec.se)  
[www.valutec.se](http://www.valutec.se)

**FINLAND**

Valutec Oy  
Tehdaskyläkatu 11 A  
FI-11710 Riihimäki  
FINLAND

Phone +358 75 756 1401

[valutec@valutec.fi](mailto:valutec@valutec.fi)  
[www.valutec.fi](http://www.valutec.fi)

**NORTH AMERICA**

Valutec AB  
PO Box 447  
East Longmeadow, MA 01028  
USA

Phone +1 413-246-2881

[robert.weithofer@valutec.se](mailto:robert.weithofer@valutec.se)  
[www.valutec.ca](http://www.valutec.ca)

**NORWAY**

Fønhus Maskin AS  
Hegdalringen 6  
NO-3261 Larvik  
NORWAY

Phone +47 33 905 863 32

[info@fonhus.no](mailto:info@fonhus.no)  
[www.fonhus.no](http://www.fonhus.no)



---

**With nearly 100 years in the industry** Valutec has developed drying equipment for the sawmill industry. Over the years we have delivered more than 4 000 wood dryers to customers all around the world. Valutec is Europe's largest supplier of wood dryers.

Valutec has established an extensive program for research and development. Close collaboration with leading researchers has resulted in continuous kiln dryers and batch kiln dryers which today are market leaders in terms of both quality and total economy. Additionally, Valutec's development of control system and simulator technology has resulted in value-adding solutions, making it possible to seize the full value of the raw material.

The Valutec Group AB includes Valutec AB, Skellefteå and Valutec Oy in Riihimäki, Finland. Collectively, the Group has a complete range of products based on Swedish and Finnish expertise in wood drying.